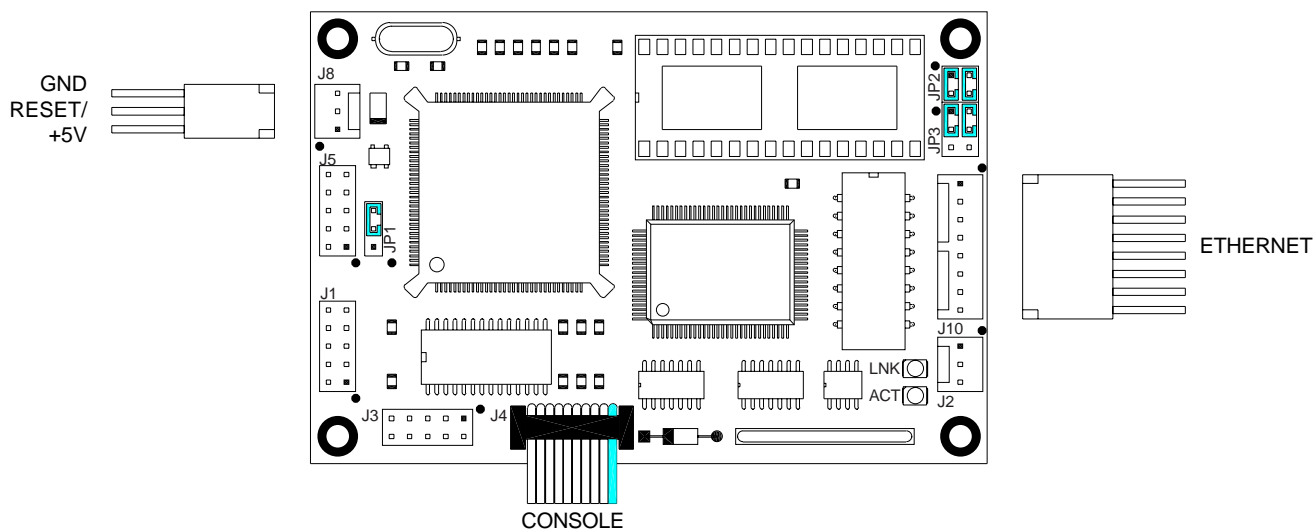


# μFlashTCP Setup Guide

93-0000

To begin working with the μFlashTCP follow the steps outlined below. In addition to the development kit, a PC compatible computer with a telecommunications program and a free serial port and a 10BASE-T network connection will be required.



1. Verify the jumper settings:
  - JP2 pins 1-3 and 2-4 shorted: socket configured for flash
  - JP3 pins 1-3 and 2-4 shorted: boot from on-board flashThese are the factory default jumper positions.
2. Connect the μFlashTCP's Console port to the PC's serial port by attaching a 9-pin ribbon cable, P/N 86-0000, between header J4 and the PC.
3. Connect the μFlashTCP to the 10BASE-T network by connecting the supplied cables (P/N 86-0018 and 86-0019) between J10 and the network hub.
4. Start the telecommunications program and configure the serial port for 9600 baud, 8 data bits, 1 stop bit and no parity.
5. Apply power to the μFlashTCP using our A/C adapter PN 88-0004 or a source of regulated 5V DC capable of supplying 400mA. J8 pin 1 is positive.

The μFlashTCP should respond with a welcome message and install the packet driver. The LNK LED should be illuminated. At the B: prompt enter DIR to look at the directory of drive B. At this point you can upload and download files to the μFlashTCP and start your software development.

If you do not get a welcome message or the characters that you type do not echo, you need to check your serial port setup. To test everything except the μFlashTCP, remove the serial cable from J4 and short pins 3 and 5 with a wire or paper clip. Type a few characters on the terminal. If the typed characters are not echoed, the problem is with your serial port setup. If the LNK LED is not illuminated, the network connection is faulty. Verify the cabling and that the network is alive.

Pin 1 of a connector can be identified in several ways. Pin one has a square PCB pad, the others are round. This should be visible on the bottom of the PCB. Pin one will also be identified on the board silkscreen with a '1' and/or a dot. On the connection drawings, pin 1 will have a solid square, the others will be a square outline. Dual row headers have ODD numbered pins on one side and EVEN numbered pins on the other. The dual row header numbering scheme follows the numbering for an IDC style ribbon cable. This numbering may not match connectors with discrete wires. Use caution when connecting cables to the μFlashTCP.

Please see the μFlashTCP User's Manual for more detailed information.