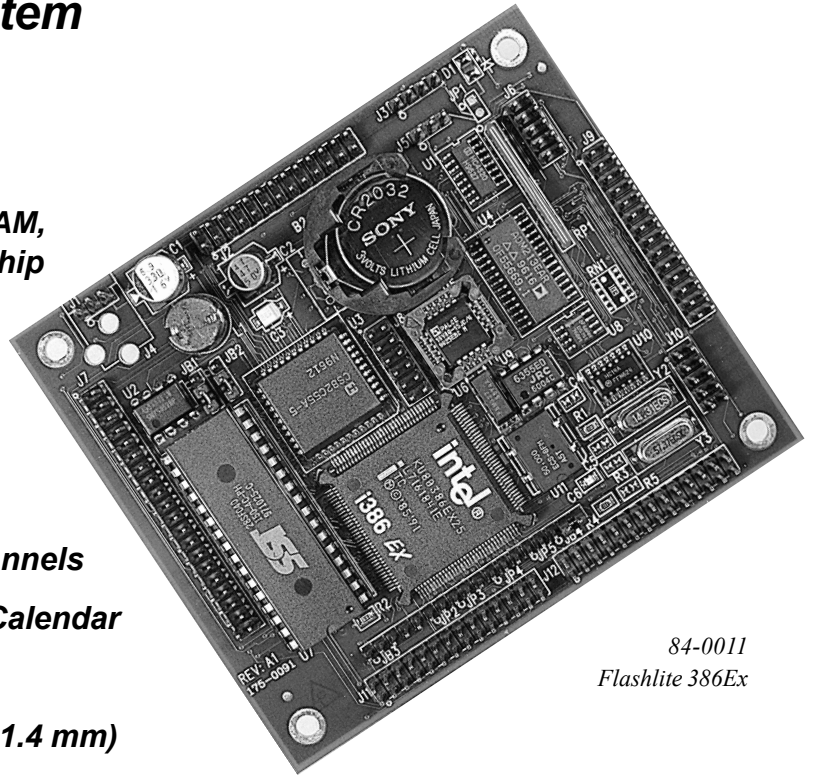


Flashlite 386Ex

With DOS & Flash File System

- 25Mhz Intel 386Ex Processor
- 512K Flash / 512K SRAM
- 32 Pin Dip Socket to accept 512K SRAM, 512K Flash, or M-Systems DiskOnChip
- 2 Enhanced DMA Channels
- 34 Digital I/O lines
- PC Compatible Serial Ports
 - 1 - RS232
 - 1 - RS232 / RS485, Software Selectable
- 3 PC Compatible Counter/Timer Channels
- Watchdog Timer & Hardware Clock/Calendar
- High-Efficiency Voltage Regulator
- Dimensions 4.2" x 3.6" (106.7mm x 91.4 mm)



84-0011
Flashlite 386Ex

The **Flashlite 386Ex** is a single board computer based on the Intel **386Ex** processor chip. The **386Ex** is a high-performance, 32-bit, single-chip microcomputer that is capable of protected-mode operation and includes an extensive array of integrated peripherals.

The **Flashlite 386Ex**, like all members of the **JK microsystems** family of controllers, comes pre-loaded with DOS and utilities so that you can begin development right away. By connecting one of the **Flashlite 386Ex** serial ports to your PC and running a telecommunications program, you can immediately upload and execute programs compiled for a PC.

The serial ports, counter/timers, interrupt controller, and speaker port on the **Flashlite 386Ex** are fully compatible with the IBM PC at both the hardware and software levels. Additional features such as the RS-485 serial port capability, battery-backed RAM and clock/calendar make the **Flashlite 386Ex** ideal for embedded controller applications.

Peripheral boards are also available to add serial ports, A/D, D/A, high current drivers, relays and isolated I/O for many data acquisition and control applications.

The **Flashlite 386Ex Development Kit** (99-0012) includes **Flashlite 386Ex** single board computer, Programming Cable, Connector Kit, 110Vin AC Adapter, Setup Guide, Schematic and CD with Borland C/C++ V4.52 Compiler, utilities, sample programs and documentation. (220Vin Development Kit 99-0013 available.)

JK microsystems, Inc.

1403 5th St. Suite D, Davis, CA 95616
<http://www.jkmicro.com>

Phone (530)297-6073
Fax (530)297-6074

Flashlite 386Ex

Specifications

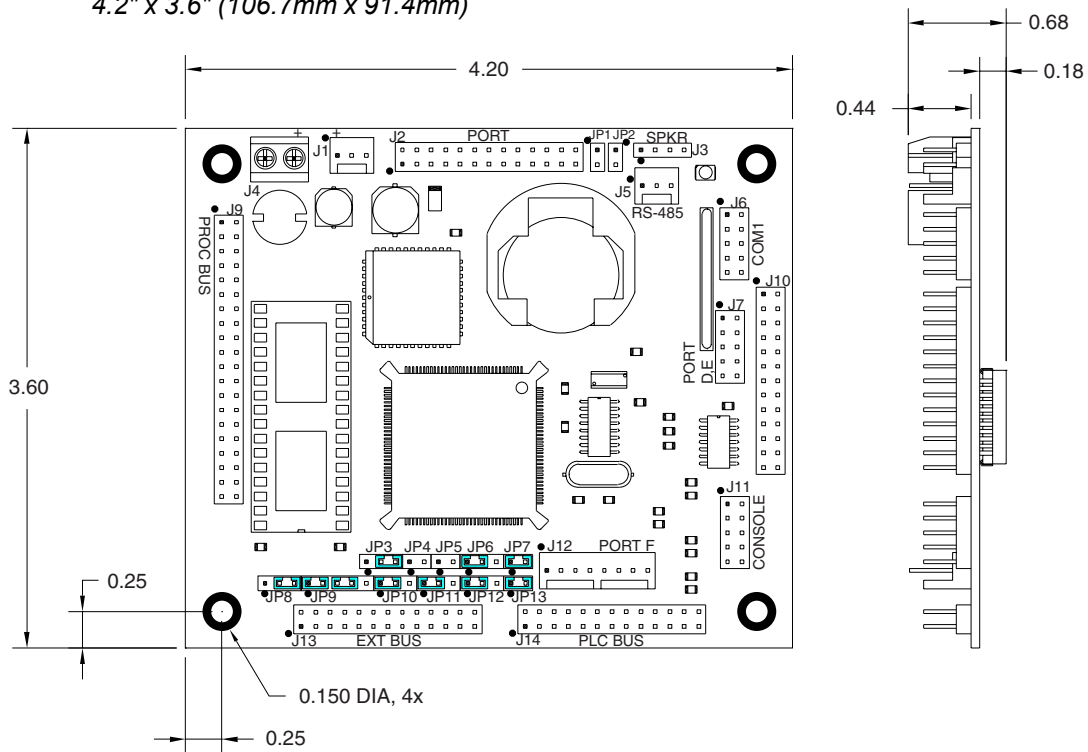
Processor	25Mhz Intel 386Ex
Operating System	XDOS (MS/PC DOS 3.3 compatible)
RAM Memory	512K Bytes SRAM
Flash Memory	512K Bytes Flash Memory
Serial Port 1	RS-232 with 5 handshake lines COM1, address 0x3F8, IRQ 4 115200 baud maximum
Serial Port 2	RS-232 no handshaking or RS-485 half duplex, COM2, address 0x2F8, IRQ 3 115200 baud maximum
Digital I/O	34 Digital I/O
Power Requirements	7 to 34 Volts DC 1.8 Watts, typical
Current Consumption	260mA at 7 Volts Input 150mA at 12 Volts Input 75mA at 24 Volts Input
Humidity	5 - 90 %, non-condensing
Temperature	-4 to 185°F (-20° to +85°C)
Weight	3.0 oz (85 gm)
Dimensions	4.2" x 3.6" (106.7mm x 91.4mm)

Connectors and Jumpers

J2	Digital I/O Ports ABC
J3	Speaker
J4	Power
J5	RS485
J6	Com1
J7	Digital I/O Port D
J9	Processor Bus
J10	Host Parallel
J11	Console
J12	Digital I/O Ports E
J13	Extended Bus
J14	PLC Bus

Optional Features

- Addition of M-Systems DiskOnChip, 512K SRAM or 512K Flash
- Peripheral boards for I/O expansion
- Matrix Keypad & Character LCD



JK microsystems, Inc.

1403 5th St. Suite D, Davis, CA 95616
<http://www.jkmicro.com>

Phone (530)297-6073
 Fax (530)297-6074